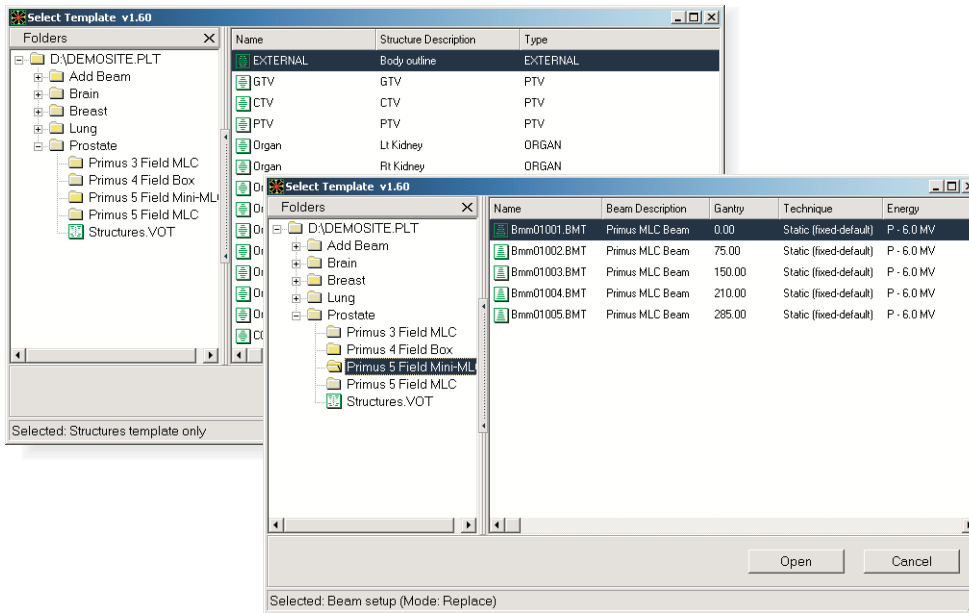


RTSuite

Treatment Planning Virtual Simulation

RTSuite Treatment Templates



Improve the Quality of Your Treatment Process with RTSuite Treatment Templates

RTSuite's predefined Treatment Templates can help you improve your department's quality system.

With RTSuite, your department's therapy approaches and clinical practices are explicitly defined in Treatment Templates. Work done at an RTSuite workspace automatically reflects the treatment principles and practices agreed upon and implemented by the responsible clinical and physics staff.

RTSuite Treatment Templates support quality process management in many ways:

- Promote consistent application of treatment goals and approaches, regardless of day-to-day or long term staffing changes
- Reduce repetitive setup and configuration tasks, making better use of staff time and minimizing data entry errors
- Capture protocol requirements as well as the preferences of individual clinicians
- Encourage consistent results regardless of who performs planning and simulation tasks
- Streamline the simulation and planning process, freeing staff time for patient interaction and treatment quality assurance
- Ease workflow and communication within the department
- Minimize staff training required to implement clinical trials or new protocols

RTSuite

Treatment Planning & Virtual Simulation

Using RTSuite Treatment Templates

The RTSuite Treatment Planning and Virtual Simulation System is based on the principle of user-definable “Treatment Templates”.

RTSuite Treatment Templates are organized by tumor site and reflect the clinic’s chosen treatment practices. The responsible staff determines which templates are needed and then design the templates to reflect the pertinent therapy approach(s) and planning or virtual simulation tasks:

Which patient structures are to be contoured?

How should a certain structure be contoured for a specific tumor site and type? How should it be displayed?

Which beam arrangements comprise the typical prescriptions for that tumor site?

The answers to these and other questions can be effectively captured and standardized in the daily clinical routine through the use of RTSuite Treatment Templates. Treatment Templates save time, improve work flow within the department and enhance the quality of the treatment process.

Complete treatment approaches: pre-defined and available online as Treatment Templates

- For each tumor location, one structure set and an unlimited number of beam arrangements can be stored.
- Each structure set defines the target volume types, organs at risk and any other structures typically contoured for a selected tumor site. Each structure’s template definition includes contouring settings, such as density range and clinical margins, and visual presentation options, such as color and transparency.
- Pre-defined beam arrangements include therapy machine, gantry orientation/angle, field size, relative weighting and field shaping definitions.
- Beams and structures can be loaded together or separately from each other, allowing the users to apply treatment templates in their individual roles.
- Treatment Templates can be copied to other RTSuite systems installed at other clinics for easy sharing of protocols and communication with other RT professionals.

An Important Contribution to Your Quality System

Modern treatment technology offers enormous potential for patient outcomes. Likewise it poses new challenges for quality assurance, process management, staff communication and workflow coordination. RTSuite Treatment Templates can help you meet these challenges.

More advantages of RTSuite Treatment Templates for your clinical routine:

- Greater consistency in treatment planning and virtual simulation practices contributes to a quality process.
- Implementation of treatment templates facilitates the quality control of the entire treatment process.
- Staff time shifts from repetitive plan setup tasks to plan customization, quality assurance and patient interaction.
- The relationship between therapy approaches and patient outcomes can be readily studied.
- Potential for improvements in the therapy process or in the therapy approach can be identified and systematically evaluated.

Simply the Smarter Solution